

JIS

JAPANESE
INDUSTRIAL
STANDARD

Translated and Published by
Japanese Standards Association

JIS E 1303 : 2001

Railway turnouts and crossings

ICS 45.080

Descriptors : turnouts, diamond crossings

Reference number : JIS E 1303 : 2001 (E)

Foreword

This translation has been made based on the original Japanese Industrial Standard revised by the Minister of Land, Infrastructure and Transport through deliberations at the Japanese Industrial Standards Committee in accordance with the Industrial Standardization Law. Consequently **JIS E 1303 : 1993** is replaced with **JIS E 1303 : 2001**.

Conformity to this Standard may come under employment of the following patent rights.

- 1 Title of the invention Railway crossing
Date of registration 1984-6-28 (relating to pressure welded railway crossing)
- 2 Title of the invention Welded crossing and its production method
Date of registration 1988-1-30 (relating to non-groove electron beam welding crossing)

This description does not influence the above patent rights on the effect, scope and so forth.

These patentees ensure, to Japanese Standards Association, intending to license anybody indiscriminately to the said patent rights on rational conditions.

Attention is drawn to the possibility that some parts of this Standard may conflict with a patent right, application for a patent after opening to the public, utility model right or application for registration of utility model after opening to the public which have technical properties besides those above-mentioned. The relevant Minister and the Japanese Industrial Standards Committee are not responsible for identifying the patent right, application for a patent after opening to the public, utility model right or application for registration of utility model after opening to the public which have the said technical properties.

Date of Establishment: 1953-10-17

Date of Revision: 2001-06-27

Date of Public Notice in Official Gazette: 2001-07-05

Investigated by: Japanese Industrial Standards Committee
Divisional Council on Railways and Rolling
Stock

JIS E 1303:2001, First English edition published in 2004-05

Translated and published by: Japanese Standards Association
4-1-24, Akasaka, Minato-ku, Tokyo, 107-8440 JAPAN

In the event of any doubts arising as to the contents,
the original JIS is to be the final authority.

© JSA 2004

All rights reserved. Unless otherwise specified, no part of this publication may be reproduced or utilized in any form or by any means, electronic or mechanical, including photocopying and microfilm, without permission in writing from the publisher.

Printed in Japan

Railway turnouts and crossings

1 Scope This Japanese Industrial Standard specifies railway turnouts and crossings of 1 067 mm and 1 435 mm gauges (hereafter referred to as “turnouts and/or crossings”). This Standard does not apply to those for SHINKANSEN railways based on the National SHINKANSEN network Law.

2 Normative references The standards listed in Attached Table 1 contain provisions which, through reference in this Standard, constitute provisions of this Standard. The most recent editions of those standards (including amendments) shall be applied.

3 Definitions For the main terms used in this Standard, the following, besides the definitions in JIS E 1311, shall apply.

- a) **non-groove electron beam welding crossing** A crossing welded by irradiation of electron beam in a vacuum circumference with the welding surfaces of the rail base materials being in contact closely each other without forming grooves.

4 Classification of turnouts and crossings To be classified into the following 4 types:

- a) Simple turnout
- b) Symmetrical turnout
- c) Diamond crossing
- d) Run-over type turnout

5 Construction, shape and dimensions

5.1 Construction A turnout consists of switch, crossing, guards and rails, and a diamond crossing consists of obtuse crossing, crossings, guards and rails.

Figs. 1 and 2 show examples of constructions.

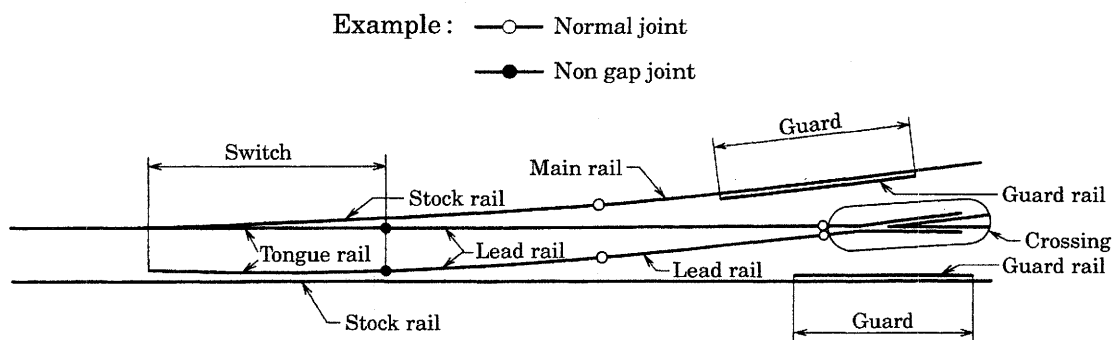


Fig. 1 Example of simple turnouts